



There's plenty to see!

©U/F・S・A・A・ Saitama Sightseeing Supporter



地球の歩き方 Trip **Good Luck**



SAITAMA, JAPAN

Just North of Tokyo

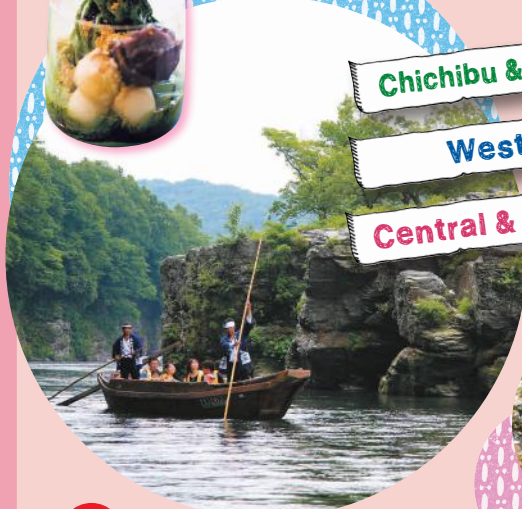
Great access between Tokyo and Saitama!



Chichibu & North Area

West Area

Central & East Area



Crayon Shin-chan
©U/F・S・A・A・ Saitama Sightseeing Supporter



Japan. Endless Discovery.

Tourism Division, Department of Industry and Labor, Saitama Prefecture



JUST NORTH OF TOKYO
The Best Day Excursions, Saitama

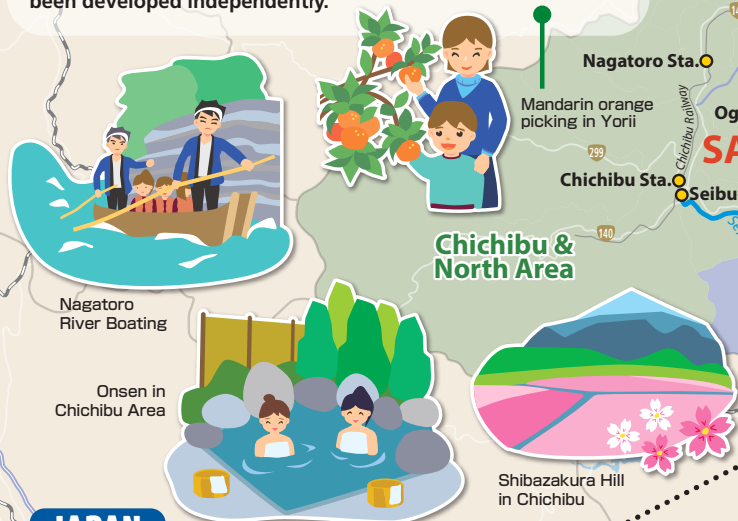
Just a short trip from Tokyo!

Experience Japan's past and present here.

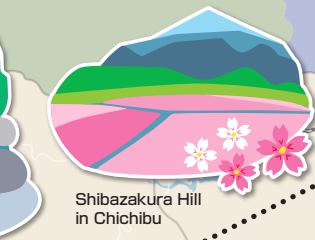
The Chichibu Area and North Area are full of the appeal of rich nature, the West Area is where you can feel the atmosphere of Japan, and the Central Area and East Area are a fusion of city and nature. Experience Japanese history and culture in Saitama Prefecture, which is full of attractions!

Chichibu & North Area

Chichibu Area and the North Area are full of excitement. Refresh the soul in magnificent natural beauty of Chichibu and Nagatoro, and taste local dishes of the North Area that have been developed independently.



Chichibu & North Area



West Area

The West Area has a historic feel, highlighted by streets with kurazukuri-style houses. Come take a trip through Edo period townscapes and vintage Showa period settings!



Town of Kurazukuri-style houses in Kawagoe

Central & East Area

Home of Omiya, the prefecture's premier shopping destination, and dotted with tourist spots for art and Japanese culture. Have fun in the city!



Shopping in Omiya



The Omiya Bonsai Art Museum, Saitama



Access from Narita International Airport

For Central & East Area	Narita International Airport ↓ Omiya Sta.	Approx. 2 hr. by express bus
For Shinjuku	Narita International Airport ↓ Shinjuku Sta.	Approx. 1 hr. and 25 min. by express bus

Access from Haneda Airport

For Central & East Area	Haneda Airport ↓ Omiya Sta.	Approx. 1 hr. and 30 min. by express bus
For Shinjuku	Haneda Airport ↓ West Exit of Shinjuku Sta.	Approx. 35 min. by express bus

Access from Shinjuku Sta.

For Chichibu & North Area To Seibu-Chichibu Sta.	Ride on JR Shonan-Shinjuku Line for approx. 5 min. from Shinjuku Sta. to Ikebukuro Sta. Transfer to the Seibu Ikebukuro Line and take the limited express train for approx. 1 hr. and 20 min.
For West Area To Hon-Kawagoe Sta.	Approx. 46 min. by limited express train from Seibu-Shinjuku Sta. on Seibu Shinjuku Line
For Central & East Area To Omiya Sta.	Approx. 32 min. by rapid service train from Shinjuku Sta. on JR Saikyo Line

Access from Ikebukuro Sta.

For Chichibu & North Area To Seibu-Chichibu Sta.	Approx. 1 hr. and 20 min. by limited express train from Ikebukuro Sta. on Seibu Ikebukuro Line
For West Area To Kawagoe Sta.	Approx. 30 min. by express train from Ikebukuro Sta. on Tobu Tojo Line and JR Line
For Central & East Area To Omiya Sta.	Approx. 25 min. from Ikebukuro Sta. on JR Shonan-Shinjuku Line

Chichibu & North Area

Experience Nature

This popular area is accessible from the city, featuring historic townscapes in Chichibu and beautiful forest and streams in Nagatoro. Come here to enjoy nature firsthand!

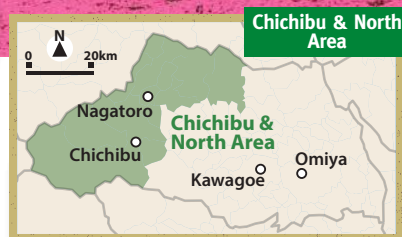


Look at the beautiful flowers!

©U/F・S・A・A, Saitama Sightseeing Supporter



This view is the best!
Let's take a rest on benches.



Chichibu & North Area



Shibazakura Hill, the Carpet of Flowers

芝桜の丘

Shibazakura Hill in Hitsujiyama Park overlooks the streets of Chichibu. With a backdrop of Chichibu's symbol Mt. Buko, more than 400,000 of 10 varieties of shibazakura flowers bloom on the vast expanses of Shibazakura Hill.

* Chichibu *



<https://bit.ly/3rcUwD2>



Chichibu's local dish Butamisonon

秩父名物・豚味噌丼

You can eat such local dishes as butamisonon (miso pork over rice) in this area.



<https://bit.ly/3oAHEoE>



Beautiful Scenery Nagatoro River Boating

長瀬ライン下り

Nagatoro Valley has been a popular spot for its scenery since long ago. Taking a traditional boat down the river with gorgeous views of the Iwadatami rock terraces on one side and the grand Chichibu Sekiheki red cliff on the other is a Nagatoro tourist mainstay.



Fun white water rafting also available!



Ride the Nagatoro steam locomotive!

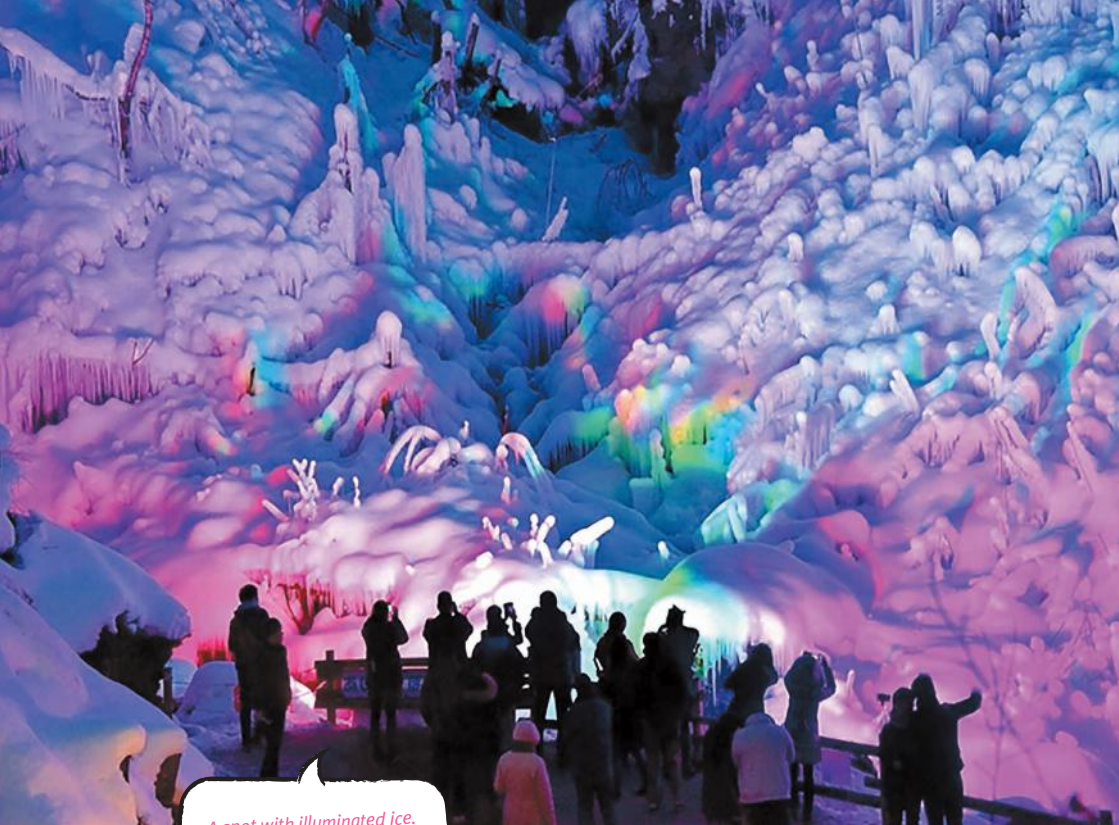
長瀬の蒸気機関車に乗ろう!

The Paleo Express is a steam locomotive with service on the Chichibu Railway. The tranquil views from the train window are worth it.



<https://bit.ly/3r1peeW>





A spot with illuminated ice. It's great to go in the winter!



Ice Art The Icicles of Ashigakubo

あしがくぼの氷柱

Icicles are formed here by the severe cold. For a certain period of time, they are all illuminated during weekends, creating a fantastical world. Enjoy a space made up of the art of light and ice!



<https://bit.ly/3ap5oqN>



Poppy-Filled Hills Color the Skies

天空を彩るポピー

Twelve million Shirley Poppies grow at an elevation of 500 meters on the Chichibu Kogen Farm. The red from the vast fields of the flowers makes the skies feel even bluer.



Poppy Festival is held on weekends during the peak season.



<https://bit.ly/3jfaCcv>

Chichibu & North Area

More Places to Enjoy Nature



Mandarin orange picking, with 400 years of history

みかん狩り

Yorii is one of the northernmost areas growing mandarin oranges in Japan, with a history spanning back over 400 years. During the orange season, many hikers visit the orange orchards to pick fruit.

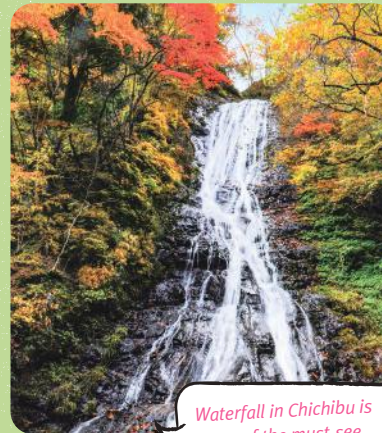


Eat fresh-picked mandarin oranges straight from the tree!



<https://bit.ly/2MiSh2p>

* Yorii *



Waterfall in Chichibu is one of the must-see spots ♪

Japan's Top 100 Falls Marugami Waterfall

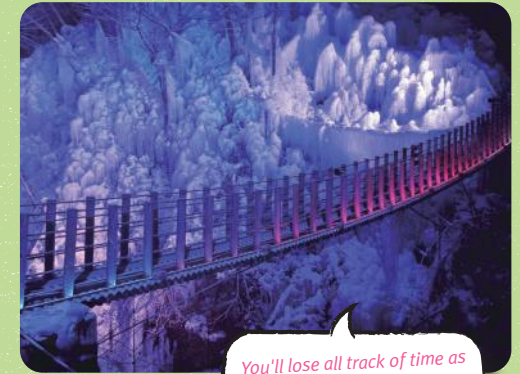
丸神の滝

Named one of Japan's top 100 waterfalls. The waterfall has no basin due to its 3 steps for water to slide down gradually. The falls are 76 meters high and flow beautifully like white silk.



<https://bit.ly/2MJO8Ge>

* Ogano *



You'll lose all track of time as the majestic waterfalls capture your soul.

Take In the Negative Ions at Onouchi Valley

尾ノ内溪谷

With headwaters rooted in Mt. Ryokamisan, Onouchi Valley offers wonderful views in all four seasons, cycling through lush greenery, fall colors and icicles. Enjoy the calming effect of the negative ions from all the waterfalls in the area.



<https://bit.ly/3an9jEq>

* Ogano *



Climbing magnificent Mt. Buko, which has an elevation of 1,304 meters, is a popular activity. Sometimes a sea of clouds is visible.



The fantastic space of "Terasaka Rice Terrace Firefly Bonfire Festival" exists for one night only in the summer.



Terasaka Rice Terrace is one of the largest in Saitama, which has many typically Japanese rural landscapes. 寺坂棚田

Boasting an area of approx. 52,000 square meters, this is one of the largest rice terraces in Saitama Prefecture. It not only makes for beautiful scenery, it also serves as a stock of water. In the fall it is also worth seeing the blooming of 1.5 million *Lycoris radiata* bulbs planted on the footpaths between the rice fields.

* Yokoze *



<https://bit.ly/36AXIWA>

Free volunteer guides available.

A Touch of History



Menuma Shodenzan Temple
Kangiin Shodendo Hall
Designated National Treasure

妻沼聖天山歓喜院聖天堂

Kangiin Shodendo Hall is the main hall of Menuma Shodenzan Temple with brilliantly-colored, ornate carvings. Come see the masterful carving technique which earned the hall its designation as a national treasure in July of 2012 and is said to be the pinnacle of early modern decorative architecture.
Entrance Fee: 700 yen

* Kumagaya *



<https://bit.ly/3cyS2L3>



Remains of Hachigata Castle
One of the Nationally designated historic sites

鉢形城跡

Remains of Hachigata Castle is a historic site in Yorii. One of the largest such sites in the Kanto region, the site was designated as a national historic site in 1932. Hachigata Castle is also designated as one of Japan's top 100 castle sites and has gathered attention as some of old castle ruins.

* Yokoze *



<https://bit.ly/2YGhoyo>



© Moomin Characters™

West Area



Enjoy a leisurely day in
Moominvalley Park

ムーミンバレーパーク

Moominvalley Park is a place where you can learn about the Moomin stories. It's also the world's first Moomin theme park outside of Finland. There are various attractions in the park, including the iconic Moominhouse.

* Hanno *



<https://bit.ly/3j99EYq>



Tokorozawa Sakura Town,
Japan's cutting edge pop culture facility

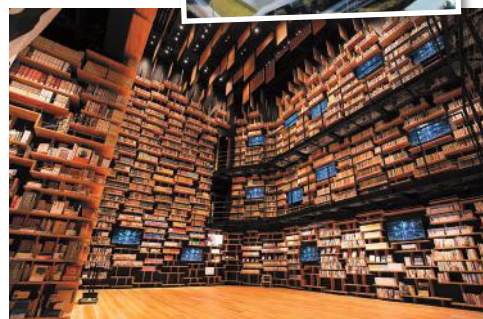
ところざわサクラタウン

This is Japan's cutting edge pop culture facility combining a museum, art museum, library, and anime museum. Don't miss the Bookshelf Theater packed with a display of massive bookcases inside the Kadokawa Culture Museum!

* Tokorozawa *



<https://bit.ly/39HNJeG>



© Kadokawa Culture Museum



West Area

Look at all the snacks!

©U/F-S-A-A
Saitama Sightseeing
Supporter

Walk the Streets of Koedo

Featuring streets where kurazukuri-style houses stand in a row, the Kawagoe area has the feel of a castle town. Enjoy a leisurely stroll through Kawagoe, dotted with historic and cultural tourist spots.



Time Bell Tower, Symbol of Koedo (Traditional Town)

時の鐘

The Time Bell Tower is a symbol of Kawagoe, conspicuously towering over the streets with kurazukuri-style houses. Heralding back to the days of the early Edo period, when it was used to tell time in the castle town of Kawagoe, the townspeople have grown fond of this bell tower.

* Kawagoe *

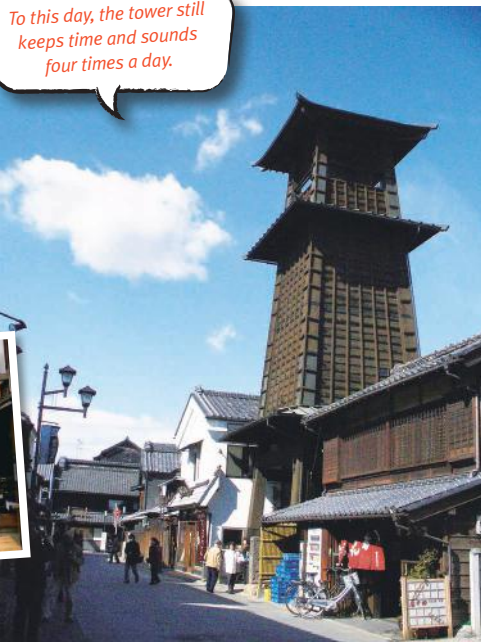


<https://bit.ly/3pH3TL3>

Take a walk through Kashiya Yokochi (Penny Candy Alley) and sample various cheap snacks →



To this day, the tower still keeps time and sounds four times a day.



Kawagoe Hikawa Shrine, Home to a God of Matchmaking

川越氷川神社

Kawagoe Hikawa Shrine is a popular tourist destination known for being home to a god of matchmaking. The towering large vermilion torii gate on the approach to the shrine is one of the largest wooden torii gates in Japan.

* Kawagoe *



<https://bit.ly/2YBAjuz>

The Sakurasaku Omamori charm is a popular souvenir



Kita-in Temple Housing Numerous Important Cultural Properties

喜多院

Built in 830, Kawagoe Daishi Kita-in Temple has numerous nationally designated important cultural properties and buildings on its grounds, including the birthplace of Iemitsu Tokugawa and the powder room of Kasuga-no-Tsubone.

* Kawagoe *



<https://bit.ly/2O148CH>

Also come to see the 500 Rakan statues!



Museum conveying the excitement and high spirits of Kawagoe Festival.



A Touch of History at Kawagoe Festival Museum

川越まつり会館

Kawagoe Festival is a nationally designated important intangible folk cultural property. Come visit Kawagoe Festival Museum to see how the culture has developed over the festival's more than 370-year history, adding Kawagoe-specific features.

* Kawagoe *



<https://bit.ly/39GG05B>

West Area

Plenty of Other Sites!

View  **Kinchakuda**, one of Japan's biggest red spider lily fields 巾着田

Shaped by the serpentine route of the Koma River, this flower field is beautiful through all four seasons. Known in particular for its red spider lilies in autumn, approx. 3.4-hectare grounds amass one of Japan's largest displays with 5 million flowers.

* **Hidaka** *



<https://bit.ly/3tjWpjj>



Also very popular for its hiking trail!



Experience 

Gourmet 

Learn about fermentation techniques at the **OH!!! ~Fermentation, Health and Magic of Food!!!~** theme park! OH!!! ~発酵、健康、食の魔法!!!~


This tourism complex is based on the concept of learning about exciting fermentation techniques and enjoying the magic of food. Learn about, experience and taste the power of fermented foods here.

* **Hanno** *



<https://bit.ly/3oGSdq8>



View  Enjoy the laid-back, colorful scenery of cherry blossoms along **Nobitome Canal**

野火止用水

This canal boasts 360 years of history. Along the waterway you'll find a promenade lined with Yoshino cherry and weeping cherry trees in the spring. Come see spots reminiscent of traditional, tranquil Japanese hometown scenery.

* **Niiza** *



<https://bit.ly/3tjXsIZ>



Experience  **Experience Sayama tea picking** at Miyanoen 宮野園

You can experience everything from lectures on tea picking to making tea by hand.

View  **Sayama Lake** enchants with seasonal scenery 狭山湖



Enjoy the vast lake and beautiful scenery, such as cherry blossoms and autumn leaves, at different times of year.

* **Tokorozawa** *



<https://bit.ly/3rgNjSA>



Experience  **Shopping** 

Hand Papermaking Experience at Saitama Craft Center

埼玉伝統工芸会館

Popular attractions include a washi paper demonstration tour and a washi papermaking experience tour. Doubling as the Ogawamachi Roadside Station, the local products section of the center also offers shopping for local vegetables, snacks, handicrafts and more. Closed for renovations as of November 2023. Scheduled to reopen December 2024.

* **Ogawa** *



<https://bit.ly/36SibRJ>



View  **Experience** 

Washi no Sato Hand Papermaking and Seasonal Views

和紙の里

Visitors can take a tour to see approx. 1,300-year-old traditional methods for hand-making washi paper, or try for themselves. Also, take a soothing walk through the courtyard of the thatched roof papermaking house and take in the seasonal views.

* **Higashi Chichibu** *



<https://bit.ly/3atu9SI>

View  **Experience** 

Extraordinary experiences await!



Or make your own canoe!



Naguri Canoe Atelier on a Quiet Lakeside

名栗のカヌー工房

Enjoy paddling wooden canoes made at this atelier on Lake Naguri. Forget your daily troubles in the quiet lakeside of Lake Naguri, surrounded by tranquil mountains under blue skies.

* **Hanno** *



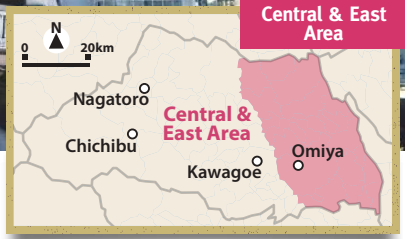
<https://bit.ly/3cFS3ND>



Central & East Area

Downtown Saitama City

The Saitama City Area is full of spots for shopping, arts, and Japanese culture. It offers the refinement as only city can!



Saitama Prefecture's Premier Shopping Destination **Omiya** 大宮

Omiya is called a shopping paradise, with Lumine Omiya which connected directly to the station and Omiya Rakuun, a commercial facility.

A bonsai-lovers' paradise with visitors from around the world!

* Saitama *



<https://bit.ly/3jc0Gpu>

Pick up that souvenir or other items you're looking for here.



photos by iStock



The Omiya Bonsai Art Museum, Saitama Next to the celebrated bonsai village

Shows tree pots, viewing stones, pictures, historic materials and more with a focus on bonsai trees. In 2017, this museum served as a sub-venue for the 8th World Bonsai Convention in Saitama.

* Saitama *



<https://bit.ly/3cAohJO>



Railcar and steam locomotive engine simulators available!



Drive a train at THE RAILWAY MUSEUM!

鉄道博物館

Features exhibitions on Japan's railway heritage and resources, as well as actual train carriages, parts, and models; hands-on workshops on railway history, fundamentals, structure and more.

* Saitama *



<https://bit.ly/3czkWLl>



IWATSUKI NINGYO MUSEUM in Iwatsuki, the town of traditional Japanese dolls

さいたま市岩槻人形博物館

Learn about the history of people and dolls at this museum which aims to pass on doll culture to future generations. The museum's goal is to educate the world about doll culture, featuring initiatives to familiarize visitors with dolls.

* Saitama *



<https://bit.ly/36yTMjI>



Many lively events are held here.



Ruins restored at Iwatsuki Joshi Park

岩槻城址公園

The castle grounds are full of color, with cherry blossoms in spring and Yatsushashi Bridge, a vermilion bridge stretching across an iris pond. There are events held year round, including a cherry blossom festival, Nagashibina, the doll memorial celebration, and more.

* Saitama *



<https://bit.ly/2YA2lPr>

Central & East Area

Outside the City

Historical Tours



Oshijo-Omotenashi Armor Team is a must-see, too!

View



Remains of Oshijo Castle

Once called one of Kanto's 7 greatest castles

忍城址

Built in Bunmei era of Muromachi period, Oshijo Castle earned a reputation as a floating fortress when it withstood an attack at the end of the Sengoku period in the subjugation of the Kanto region by Hideyoshi Toyotomi.

* Gyoda *



<https://bit.ly/2YGhRAE>

Auto Race



Capacity for 44,000!

View



Kawaguchi Autorace

Largest motorcycle racing track

川口オートレース

Kawaguchi Autorace is the largest among the 5 racing tracks in Japan. Come and feel the exhilarating races with motorcycles roaring, sprinting at speed of 150 km/h!

* Kawaguchi *



<https://bit.ly/2LdhPNR>



As seen in the anime Lucky Star!

View



Washinomiya Shrine

Kanto's oldest grand shrine

鷲宮神社

Kanto's oldest grand shrine has been well protected by powerful supporters in each period, with the Kamakura shogunate rebuilding the main building and the Tokugawa shogunate contributing 400 koku to the shrine.

* Kuki *



<https://bit.ly/3oGikO5>



Experience



Take a tour of a factory making snacks that are very popular in Japan!

グリコピア・イースト

You can see the whole process of making Glico's popular snacks Pocky and Pretz from mixing the ingredients to packing the finished product in a box. Reservations are required, so make a reservation in advance!

* Kitamoto *

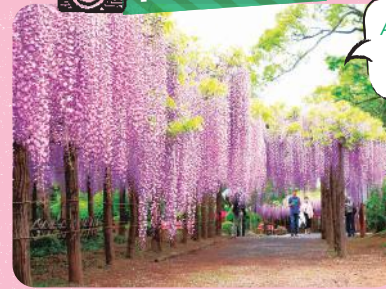


<https://bit.ly/36ydMTO>

View



Park Walks



Also a mother tree of Kyushaku-fuji wisteria in Japan.

* Kasukabe *



<https://bit.ly/39G6Y3>

The Wisteria in Ushijima

National Special Natural Plant 牛島の藤

It is a giant wisteria tree, famous for being very big and having more than 1,200 years, admired as the No.1 in the world. The flower clusters in full bloom may reach as much as 2 meters, and the beautiful wisteria purple of the flowers are fascinating.



* Ina *

Largest rose garden in Saitama with 400 varieties of roses and 5,000 rose bushes

バラ園



<https://bit.ly/3jfbP3x>



* Yashio *

Flower Park with a wide spread of flowers

フラワーパーク



<https://bit.ly/3pUj00c>



Soka Matsubara Promenade

National scenic beauty place of "Oku no Hosomichi"

草加松原

* Soka *



<https://bit.ly/2MJ0QmS>



Satte Gongendo cherry embankment, scenic spot in Satte

幸手権現堂桜堤

* Satte *



<https://bit.ly/3p04bjm>

Kasukabe Information Center

Puratto Kasukabe

ぶらっとかすかべ

This is a facility that provides information on the appeal of the city of Kasukabe. Visitors can learn about tourism, events, city government and more. There is also a section featuring Crayon Shin-chan, who serves as a guide to the town, so feel free to stop in.

* Kasukabe *



<https://bit.ly/2N0Qbaa>

View



This Nakasendo Post Station conveys the atmosphere of Edo

中山道宿場町

Okegawa prospered greatly as an Edo period agricultural products trading center. There are still merchant houses and inn buildings from the Edo period remaining along Nakasendo, giving us a glimpse of the time when the town flourished as a post town.

* Okegawa *



<https://bit.ly/3cDcZjN>

Local Dishes

In a prefecture offering both natural and urban sites, each area of Saitama has developed its own regional cuisine. Here is a selection of 6 great dishes!



Great for big eaters!

* Ogano *

Warajikatsu A Chichibu specialty

Beloved by the locals, this *katsudon* dish features two large deep-fried pork cutlets atop a bowl of rice. This specialty combines the crisp, juicy pork cutlets in a secret recipe sauce.



Unagi with the perfect combination of eel and sweet sauce!

* Kawagoe *

Unagi うなぎ料理

A Kawagoe specialty

Being surrounded by rivers, the specialty in Kawagoe is unagi, or freshwater eel. The unagi is well marbled with a soft texture that you have to try at least once. There are numerous long-established unagi restaurants in Kawagoe City that date back to Edo times.

* Honjo *

Tsumikko つみっこ with plenty of vegetables and delicious flavor

Tsumikko is said to have been eaten during work breaks when sericulture was popular. This is a specialty dish of Honjo that is made by putting kneaded flour dough in a pot and stewing it with plenty of vegetables.



A recent Higashimatsuyama yakitori specialty



* Higashi-matsuyama *

Yakitori (pork) 豚のカシラ肉 Slow-cooked over a charcoal grill

The famous *yakitori* (pork) of Higashi-matsuyama is an original recipe of skewered meat of pig's head, slowly and carefully grilled over charcoal fire. It is served with a spicy miso sauce, which combination is exquisite! Try it once, and you'll be hooked.

* Kazo *

Kazo Udon is a famous Udon variety in Saitama, which is famous for udon 加須うどん

Kazo udon is a local dish that spread to Kazo where wheat cultivation flourished, and it continues to be loved today. The chewy and smooth texture of this superb udon is irresistible.

* Hidaka *

Koma-nabe Hotpot 高麗鍋 Healthy cuisine with local vegetables

This local dish was created to commemorate the 1,300-year anniversary of the establishment of the former Koma County. Required ingredients are kimchi, locally grown vegetables from Hidaka, and ginseng.

Each restaurant has its own special twist on the flavor!



Hands-on Experience

Saitama offers plenty of opportunities to get in touch with Japanese culture and nature! Get a more intimate look at Japan by trying on some traditional dress, baking sembei crackers, and many more cultural experiences.



Have your picture taken in a kimono!



Try on surprisingly heavy samurai armor!



Try on a kimono in a fitting traditional town setting

着付け体験

In the Kawagoe area, there are many shops about that offer kimono rentals. With the traditional Japanese look of Streets with kurazukuri-style houses and Time Bell Tower, this is the spot to take your pictures! Walk around in a kimono and take your own photos.

* Kawagoe *



<https://bit.ly/2MRrFoM>

Try out some armor and feel what it's like to be a warlord.

甲冑体験

With its many Sengoku period sites, you can try some armor on in Gyoda. There is one suit of adult size armor and one suit of child size armor available for parent and child to try on together.

* Gyoda *



<https://bit.ly/3avBNvR>

Other Experiences



Try farmwork with fruit picking

フルーツ狩り

* Chichibu & Ogano *



<https://bit.ly/2YCYKY1>



Bake your own Soka sembei crackers, the local specialty

The real thing, from the source

草加せんべい

* Soka *



<https://bit.ly/36DHFSq>



Learn the art of making soba noodles

そば打ち

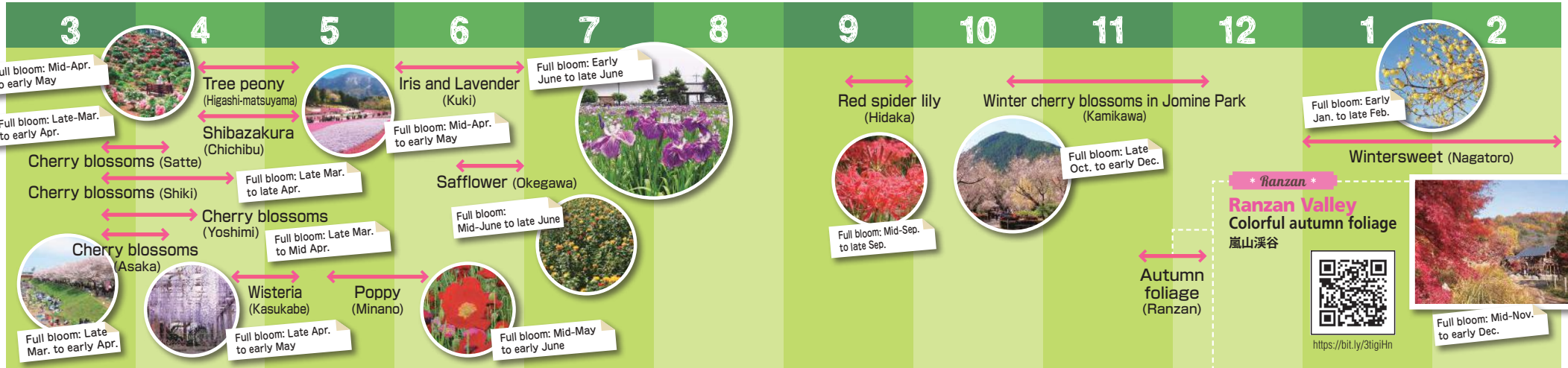
* Ogano *



<https://bit.ly/3jjk3bm>

Saitama, abundant in nature, allows you unique to Japan, such as Cherry blossom,

to experience the four seasons. From flowers that create an atmosphere Plum and Wisteria, to richly colored autumn leaves, there's spectacular scenery in every season.



Full bloom: Late Mar. to early Apr.

*** Asaka *** 黒目川桜

A row of cherry trees beautifully decorates the **Kurome River**

The Kurome River runs through the center of Asaka City. Jogging or walking on the promenade along the river is an enjoyable activity. The sight of the Kurome River reflecting the colors of the row of cherry trees and rape blossoms in full bloom in the spring is worth seeing.



<https://bit.ly/2YzIVSe>

*** Higashi-matsuyama *** 東松山ぼたん園

One of Japan's largest **tree peony park**



Full bloom: Mid-Apr. to early May



<https://bit.ly/3jd56L>

*** Shiki *** いろは親水公園

Iroha Shinsui Park, where you can enjoy rows of cherry trees



Full bloom: Late Mar. to late Apr.



<https://bit.ly/36BN24z>

*** Yoshimi *** 吉見百穴

Cherry blossom viewing at the charming **Hundred Caves of Yoshimi (Hyakuana)**



Full bloom: Late Mar. to Mid Apr.



<https://bit.ly/2YJxJcT>

*** Kuki ***

あやめ・ラベンダーのブルーフェスティバル
Iris and Lavender Blue Festival



Full bloom: Early June to late June



<https://bit.ly/3pLdk7e>



*** Okegawa *** べに花畑

A safflower field colored deep orange

Okegawa prospered as a trading center for agricultural products including safflowers and as a post station in the Edo period. Today a safflower festival is held there during the best flower viewing period, from mid to late June.



<https://bit.ly/3pUALJD>



Full bloom: Late Oct. to early Dec.

*** Kamikawa *** 城峯公園 冬桜

Jomine Park Where rare light crimson winter cherry blossoms bloom

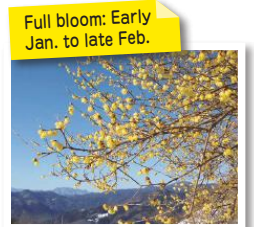
A park that features full facilities such as camping grounds, a restaurant, souvenir shop, barbecue area and viewing deck in addition to blooming seasonal flowers, making it perfect for families to enjoy.



<https://bit.ly/3tkQhY0>

*** Nagatoro *** 長瀬・宝登山口ウバイ園

Mountain summit with the fragrance of wintersweet



Full bloom: Early Jan. to late Feb.



<https://bit.ly/3aqFFOB>



EVENT

* Chichibu *

Chichibu Yomatsuri, Night Festival

One of Japan's top 3 hikiyama (float) festivals

秩父夜祭

Counted as one of Japan's 3 great float festivals along with Gion Festival in Kyoto and Takayama Festival in Hida. It is the Big Annual Festival of Chichibu Shrine, which enshrines several gods from the Chichibu region of Saitama Prefecture, and has a history of more than 300 years.



<https://bit.ly/36A211Q>



Great rings of fireworks light the winter night skies.

Dates: festival on Dec. 2nd and Dec. 3rd



Full of interesting events, such as Saitama's three Night Festival", "Kawagoe Festival" and "Kuma Enjoy events that you can't find anywhere else!

big festivals, the "ChichibuYomatsuri gaya Fan Festival".

Enjoying many types of dance is one of the best parts!



* Asaka *

Dates: 1st Fri., Sat. & Sun. of Aug.

Saika Festival

The Asaka Citizen Festival - overflowing with love for the community

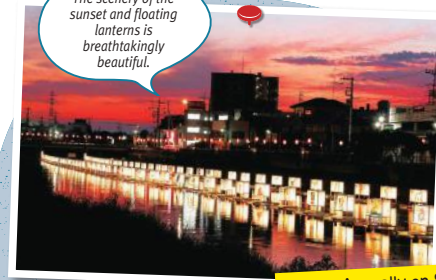
朝霞市民まつり「彩夏祭」

Features two venues, the Asaka venue and North Asaka venue, both of which offering various events such as Firesakoi Naruko dancing and fireworks. Events in which the local Asaka citizens participate in together.



<https://bit.ly/39E7mEY>

The scenery of the sunset and floating lanterns is breathtakingly beautiful.



* Sugito *

Dates: Annually on Sat. & Sun. in early Aug.

The Furutone River Floating Lantern Festival

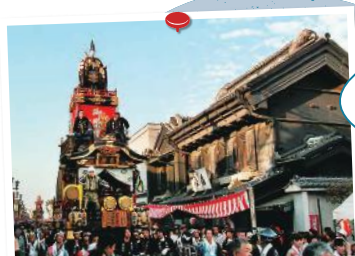
features wondrous scenery

古利根川流灯まつり

This is a festival in which about 250 large, handmade lanterns are floated in the Furutone River. A belt of light from the lanterns completely fills about 1kilometer of the river's surface. That wondrous scene has a beauty like that of the Milky Way.



<https://bit.ly/3jbCzSr>



The height of city festivals, with an Edo feel!

Dates: 3rd Sat. & Sun. of Oct.

* Kawagoe *

Kawagoe Festival held by Hikawa Shrine

川越まつり

Luxurious floats are pulled around all day long, and when they pass each other, they compete in a spectacular hayashi performance (traditional Japanese orchestra) musical battle known as "hikkawase". Nationally designated as an important intangible folk cultural heritage.



<https://bit.ly/3tkOVMP>



This passionate festival continues from day into the night!



Dates: July 20 to 22

* Kumagaya *

Kumagaya Fan Festival

A passionate festival

熊谷うちわ祭

A fan festival regularly held at Atago Yasaka Shrine. Referred to as Kanto's best Gion Festival for its dazzling display of 12 floats parading through the urban area with the Kumagaya musical accompaniment.



<https://bit.ly/2YA182a>

Dates: Mid-Feb. to early Mar.



* Konosu *

Konosu Doll Festival

featuring Japan's highest hina doll pyramid

鴻巣びっくりひな祭り

Leading Hina doll production area, boasting nearly 400 years of tradition. This event from mid February to early March features Japan's tallest Hina doll pyramid that is surprisingly tall in the main venue.



<https://bit.ly/2YG0vNl>

Dates: Jan. 1, 2 & 3



* Kamikawa *

Kanasana Shrine is lively during the Japanese New Year and the daruma doll fair

金鐘神社

This shrine is said to have been founded by Yamato Takeru during his eastern expedition. Mt. Mimuro and the area around it behind the hall of worship are enshrined as a deity. During the first three days of the new year, a great many people make their first shrine visit of the year at Kanasana Shrine and Daikofusho-ji Temple (Kanasana Daishi) and many visit them for the daruma doll fair.



<https://bit.ly/39Leqzn>

Date: Nov. 3



* Moroyama *

Yabusame (horseback archery) Festival at Izumo Iwai Shrine

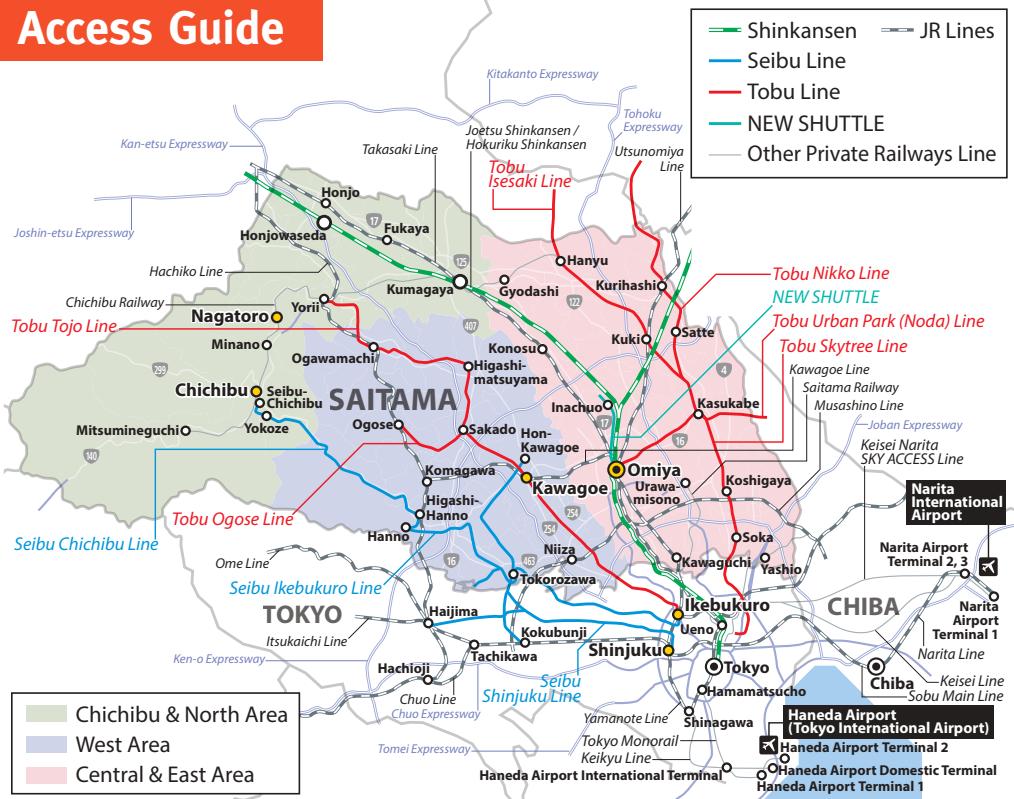
出雲伊波比神社の流鏝馬まつり

This is a festival held at Izumo Iwai Shrine for more than 950 years as part of the region's traditional culture. You can see superb horseback tricks up close, including archery from atop a galloping horse, folding fan tricks and noroshi.



<https://bit.ly/2Mw9kRr>

Access Guide



Special train and bus deals!

For Kawagoe

SEIBU Rail Pass

Discount round-trip passes between Seibu-Shinjuku Sta. or Takadanobaba Sta. and Hon-Kawagoe Sta. on sale.

SEIBU Railway

www.seiburailway.jp/railways/tourist/english/ticket/daypass.html



KAWAGOE DISCOUNT PASS

Special discount round-trip passes from Ikebukuro Sta. to Kawagoe Sta. or Kawagoeshi Sta.

TObU Railway

www.tobu.co.jp/foreign/en/



For Saitama City

TOKYO Wide Pass

Ride freely on JR Shinkansen, limited express, express, local trains, etc. within Kanto area for 3 days.

East Japan Railway

www.jreast.co.jp/e/



埼玉県内の観光案内所

Saitama Prefecture Tourist Information Centers

Stop by one of these locations if you need help or want some tourist information while traveling in Saitama!



<http://bit.ly/3axnwp4>

Check this site for more information!

ちょこたび埼玉

Chocotabi Saitama

Check this site for Saitama Prefecture sightseeing information!



<https://en.chocotabi-saitama.jp/>

Also includes info on preventing the spread of COVID-19!

埼玉観光サポートデスク

Saitama Tourism Support Desk

This Saitama Prefecture tourist information site is packed with things you won't find in Tokyo. Feel free to contact the Saitama Tourism Support Desk if you have any questions on sightseeing in Saitama!



<https://saitama-supportdesk.com/>